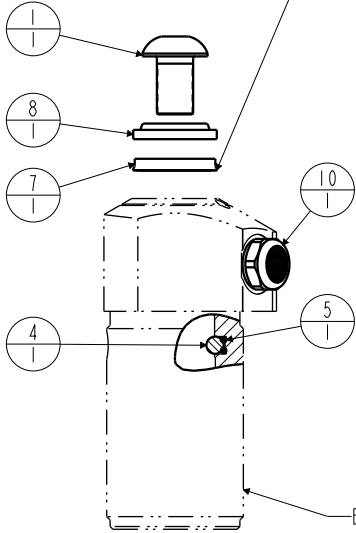


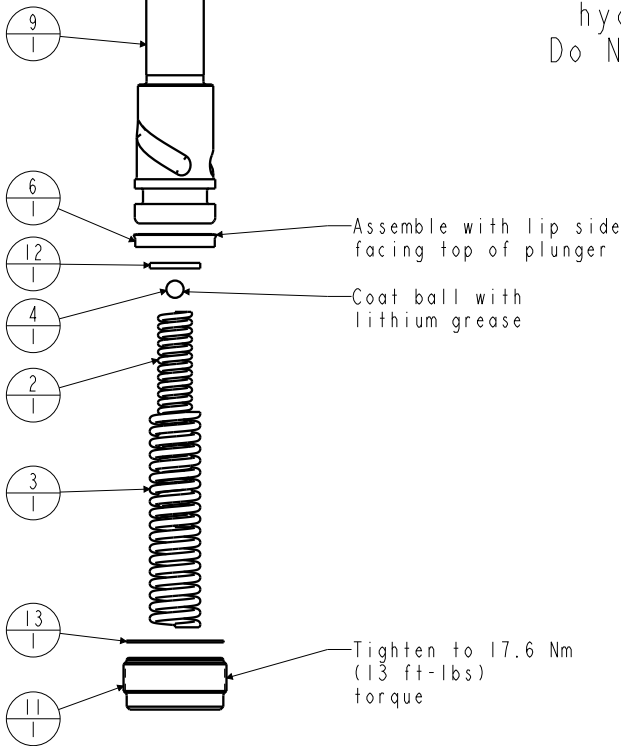
N/A	N/A	46100007	KIT, SPRING	N/A	N/A	NOTED
N/A	N/A	6V150109	KIT, SEAL, FKM	N/A	NOTED	N/A
N/A	N/A	46000007	KIT, SEAL, STANDARD	NOTED	N/A	N/A
13	1	39T55002	GASKET, (-021)	X	X	X
12	1	81590901	DISK, PIVOT, BALL, SC, 1100, SA			X
11	1	81530901	RETAINER, SC, 1100			
10	1	49001904	BREATHER, 1/8 BSPP			
9	1	47510900	PLUNGER, SC, 4.9 kN			
8	1	39053001	WIPER, SNAP-IN, (5/8)	X	X	
7	1	39010020	SEAL, BEVEL W/HEEL INSERT, 5/8 x 1/8 x 7/8	X	39V10020	
6	1	39010015	SEAL, BEVEL, 11/16 x 3/32 x 7/8	X	39052011	
5	1	39000019	O-RING, (-003)	X	39051006	
4	2	23600011	BALL, STEEL, ALLOY, .187	X	X	X
3	1	23313008	SPRING, COMPRESSION			X
2	1	23311013	SPRING, COMPRESSION			X
1	1	21500009	SCREW, CAP, BTNH, M10 X 16, ALY			
No.	QTY	PART No.	DESCRIPTION	Standard Seal Kit	FKM Seal Kit	Spring Kit

Assemble with lip side facing bottom of body



Body - Not Replaceable

Lubricate all seals with clean hydraulic fluid prior to assembly.
Do Not Use Silicone Based Lubricants.



Tighten to 17.6 Nm
(13 ft-lbs)
torque

PARTS LIST



VEKTEK, INC.
1334 E. SIXTH AVE. P.O. BOX 625
EMPORIA, KS. 66801 U.S.A.

ASSEMBLIES AFFECTED

PARTS LIST, ASSY, SC, TB, 4.9KN, SA, Ver.sCam

41-5005-11

41-5005-12

41-5005-15

SIZE
A

MPL1501

REV
M

SHEET 1 OF 1

FORM FEG035_PL_ASIZE, REV. B

M	3911	RELEASE	JDW	08/19/19
REV	IN ACCORDANCE WITH ECN	EFFECTIVE DATE	REVISED BY	DATE
DRW BY:	BUSH	DRAWING STATUS: Released		
DATE:	12/13/94	PRODUCTION APPROVED FOR RELEASED STATUS ONLY		